



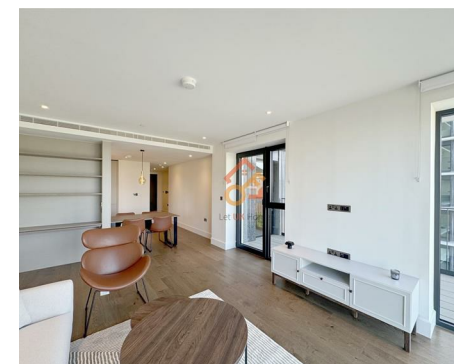
Let **UK** Home

**2 Bedrooms**

**Flat**

Located in London

**£4,300 Per Month**



[info@letukhome.co.uk](mailto:info@letukhome.co.uk)

<https://www.letukhome.co.uk/>

01795 358 886



# Fountain Park Way London

W12 7SN



Let UK Home are excited to offer this brand new two bedroom apartment in the heart of Westmont Apartment part of the White City Living.

This property comprises a large bright open plan kitchen and living room leading to a large private balcony with great views, two double bedrooms with wardrobe (master en-suite), a large family sized bathroom and ample storage.

Residents of this exceptional development will have exclusive use of indoor swimming pool, gymnasium, two 12-seater cinemas, private dining room, residents lounge and rooftop bar. Additionally, residents of this exceptional development will benefit from a concierge and an unrivalled selection of shops, bars, restaurants, leisure facilities and beautiful courtyards.

White City Living is surrounded by world-class retail, entertainment, education, cultural and commercial venues, and is within walking distance of Europe's largest shopping mall, Westfield, with more than 500 shops, cinemas, restaurants and supermarkets, providing a wealth of shopping, dining and entertainment options to meet residents daily shopping and leisure needs. Not only that, there are many theatres, concert halls, art galleries and museums nearby such as the Design Museum, Leighton House Museum, Shepherd's Bush Empire, Bush Hall and The Bush Theatre, providing residents with a wealth of cultural and entertainment options. In addition, there are a lot of green spaces in the development, and there are Ravenscourt Park and Holand Park nearby, providing residents with great places for leisure and entertainment.

# Fountain Park Way London

## £4,300 Per Month

- 6th Floor
- 24h Security
- Swimming Pool
- Cinema & Game Room
- Private Dining Room



- Concierge Service
- The Spa
- Residents Lounge
- The Gym
- EPC Rating: B



**WESTMONT  
APARTMENTS  
APARTMENT U.06.08**

2 Bedrooms  
Sixth Floor  
Sold  
Palette: Organic

Kitchen / Dining Room	2.50m x 3.76m	8'2" x 12'4"
Living Room	5.51m x 3.96m	18'1" x 11'3"
Bedroom 1	4.92m x 2.92m	16'2" x 9'7"
Bedroom 2	3.71m x 2.75m	12'2" x 9'0"
Internal Area	77.3 sq m	832 sq ft
Balcony	4.53m x 1.50m	14'11" x 4'11"
External Area	6.9 sq m	75 sq ft

- PLANS
- INTERIORS
- MATERIAL CHOICES
- FLOORING
- CARPET
- STYLE IT
- VIEWS
- SPECIFICATION



Floorplans shown for 'White Oak Living' are for approximate measurements only. Exact layout and sizes may vary. All measurements are taken within a tolerance of 30. To increase legibility, these plans have been sized to fit the page. Dimensions and layout may vary to a different scale to other similar properties. The illustrations are not intended to be used for design, appliance sizes, or items of furniture. Student appliances, fixtures indicated are for guidance only. External cladding and window/mulion locations and sizes are indicative and subject to change.



Let **UK** Home

3F 2 Eastbourne Terrace  
Paddington  
London  
W2 6LG

01795 358 886

info@letukhome.co.uk

**Council Tax Band: F**

**Local Authority:**

Agents Note: Whilst every care has been taken to prepare these particulars, they are for guidance purposes only. All measurements are approximate and are for general guidance purposes only and whilst every care has been taken to ensure their accuracy, they should not be relied upon and potential buyers/tenants are advised to recheck the measurements.

Energy Efficiency Rating		Current	Potential
Very energy efficient - lower running costs			
(92 plus) <b>A</b>			
(81-91) <b>B</b>		87	87
(69-80) <b>C</b>			
(55-68) <b>D</b>			
(39-54) <b>E</b>			
(21-38) <b>F</b>			
(1-20) <b>G</b>			
Not energy efficient - higher running costs			
<b>England &amp; Wales</b>	EU Directive 2002/91/EC		

<https://www.letukhome.co.uk/>